

St. Paul's Lutheran Church

CHURCH GOVERNANCE

Church Governance at St. Paul's is comprised of the **Executive Council**, **Discipleship** and **Pastoral Care** ministries. Members are elected by the congregation to serve on these committees and hold specific positions and functions.

EXECUTIVE COUNCIL

The Executive Council (EC) is comprised of six elected members who hold the following positions and have voting privileges. President; Vice-President; Treasurer; Secretary; Vice President of Finance; and Vice-President of Facilities. Each elected member serves as an integral and contributing member to discussions held and matters addressed during the conduct of EC business. The Senior Pastor and School Principal attend EC meetings and serve as advisory members to the Council.

The EC is responsible for the development and enforcement of financial, personnel, and administrative policies for the church and school. The EC meets once per month, typically the second Tuesday of the month, to identify, address, resolve, or refer for resolution matters of interest relative to the welfare of the congregation. Specifically, the EC is responsible for establishing the congregational budget, coordinating budget needs with the directorate staff, and presenting a balanced budget to the congregation for approval at the annual Voters meeting. The EC is also responsible for addressing grievances from the staff and resolving said grievances in the best interest of the congregation.

All EC members are responsible for working together to support the day-to-day operations of the church and school. In addition to these duties, however, each position fills specific roles as described.

PRESIDENT



Tim Murphy

VICE-PRESIDENT



Crystal Jones

TREASURER



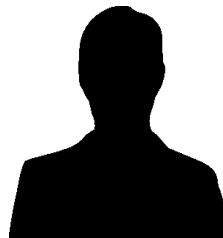
Gary Pearson

SECRETARY



Sherry Nusbaum

VICE PRESIDENT OF FINANCE



Steve Berger

VICE PRESIDENT FACILITIES



Glenn Stewart

EXECUTIVE COUNCIL POSITION RESPONSIBILITIES

PRESIDENT

- Serves as Chair for the EC meetings and facilitator for the Annual Voter's Meeting;
- Works with the Senior Pastor to develop the agenda for each EC meeting;
- Works closely with church/school staff and church ministries to ensure they have the resources and support needed to accomplish their duties or objectives;
- Coordinates with the Business Manager and Treasurer to monitor the execution of the budget and the stability of church and school finances and investments.

VICE-PRESIDENT

- Serves as Chair for the Discipleship Ministry;
- Develops and represents the Strategic Plan and Vision Statement at the annual Voters Meeting;
- Provides other support functions as mutually determined with the President.

TREASURER

- Oversees the day-to-day execution of the congregation's budget;
- Takes the lead in preparing the draft budget for discussion and final budget for approval;
- Coordinates with the Business Manager on a regular basis to ensure the continuity of available funds to meet the church's needs;
- Serves as one of two principle signatories on all payments issued by St. Paul's;
- Consults with auditors as required to accomplish the successful completion of the yearly audit requirement.

SECRETARY

- Attends both EC and Discipleship Ministry meetings;
- Records and distributes or presents for approval the minutes of EC and Discipleship monthly meetings;
- Records the minutes of annual or Special Voter's meetings;
- Ensures proper dissemination of approved minutes to the appropriate offices.

VICE PRESIDENT OF FINANCE

- Consults with the Treasurer and Business Manager on the development of the yearly budget and investments;
- Oversees and monitors the congregation's financial investments to promote both growth and stability in accordance with the needs of the congregation;
- Secure short term and long term financing in concert with the needs of the congregation;
- Work with legal counsel in the acquisition of property or other major assets;
- Work with the VP of Facilities and Director of Facilities in negotiating major equipment lease contracts.

VICE PRESIDENT OF FACILITIES

- Coordinates with, and provides support to the Facilities Manager in all matters of property and building management;
- Serves as liaison between the EC and the Facilities Manager;
- Provides guidance and support to any major construction or refurbishing project;
- Makes recommendations to the EC regarding the maintenance of the buildings and grounds.

PASTORAL CARE

The Pastoral Care Ministry is a ministry that provides feedback and support to the Senior Pastor and staff pastors. Members of the congregation are elected or appointed to serve in this ministry.



Nancy Hoover



Warren Miller



Jamie Jaseph



Natalie Knowles



Kurt Phillips



Larry Geidel

DISCIPLESHIP MINISTRY

The Discipleship Ministry is a visionary ministry that develops 3, 5 and 6 year maps, alerting the leadership to coming trends and obstacles. Members of the congregation are elected or appointed to serve in this ministry.

PRESIDENT



Crystal Jones

APPOINTED MEMBER



Don Hargadon

ELECTED MEMBER



Wes Pierce

PASTORAL LEADERSHIP



Pastor George

ELECTED MEMBER



Sherry Nusbaum

ELECTED MEMBER



Donna Fenzel

ELECTED MEMBER



Chris Getz

CONTACT US!



410-766-2273

churchoffice@stpauls-lutheran.org